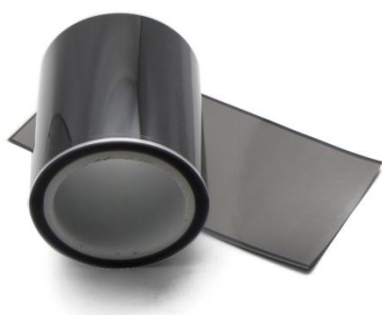


# Synthetic Graphite Thermal Sheet CTLGS1500

CTLGS1500 is a synthetic graphite heat sink. CTLGS1500 has a unique grain orientation, lamellar structure can be well adapted to any surface, even heat conduction along the two directions. Plane thermal conductivity of up to 1900 W/m-K. CTLGS1500 products while also the thickness of uniform heat to provide thermal isolation. Heat shielding and components while improving the performance of consumer electronics products. CTLGS1500 composite graphite sheet is a polyimide sintered novel film material with high thermal conductivity and excellent product design flexibility.



## Features & Benefits:

- High thermal conductivity -flat heat conductivity can be up to 1900W /m-K, 40% lower thermal resistance than aluminum, 20% lower than copper.
- Ultra-light -than the same size aluminum to 30% lighter, 80% lighter than copper.
- Temperature resistance-using temperature up to 400 °C , the minimum can be lower than -40 °C .
- Easy processing-can be made into different die sizes, shapes and thickness, can provide planar sheet die.
- Ease of use-graphite heat sink can be applied to any smooth flat and curved surfaces.
- Flexibility- easily with the metal, the insulating layer or double-sided adhesive made of plywood, increase design flexibility in the back with adhesive.

[www.coolthermo.com](http://www.coolthermo.com)

CoolThermo - Asia

Phone: 86-133-1690-6731

Skype: 86-133-1690-6731

Email: [info@coolthermo.com](mailto:info@coolthermo.com)

Add: Room 101, No. 214, District 3, Longsheng New Village, Longsheng Community, Dalang Street, Longhua District, Shenzhen 518110

## Thermally Conductive Material

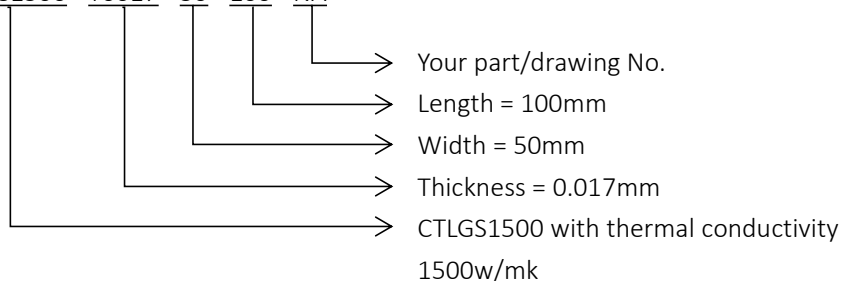
TYPICAL PROPERTIES OF NATURAL GRAPHITE CTLGS1500			
Test Item	Unit	CTLGS1500	Test Method
Carbon Content		99.90%	
Colour	-	Grey	Visually
Thickness	mm	0.017/0.025	ASTM D374/374M
Density	cm <sup>3</sup>	2.1g	-
Hardness	Shore a	85	GB/T531
Tensile Strength	PSI	650	ASTM D412
Flame	-	V-0	UL 94
Temp Resistance	°C	-40~400	-
Thermal Conductivity (X)	W/mk	1500	ISO 22007-2
Thermal Conductivity (Y)	W/mk	15	ISO 22007-2
Thermal Resistance	°C	0.15%	-
Electric Conductivity	s/cm	19000	-

## Configurations Available:

- Sheet form, die-cut parts, and roll form
- With or without pressure sensitive adhesive

## Build a Part Number

CTLGS1500 - T0017 - 50 - 100 - NA



## Standard Options

Note: The material can be customized. If you can't find the material that meets your requirements in our existing materials, you can consult the sales manager whether the material you need supports customization, and we will give you a reply within 24H.

All statements, technical information and recommendations herein are based on tests we believe to be reliable, and THE FOLLOWING IS MADE IN LIEU OF ALL WARRANTIES, EXPRESSED OR IMPLIED, INCLUDING THE IMPLIED WARRANTIES OF MARKETABILITY AND FITNESS FOR PURPOSE. Sellers' and manufacturers' only obligation shall be to replace such quantity of the product proved to be defective. Before using, user shall determine the suitability of the product for its intended use, and the user assumes all risks and liability whatsoever in connection therewith. NEITHER SELLER NOR MANUFACTURER SHALL BE LIABLE EITHER IN TORT OR IN CONTRACT FOR ANY LOSS OR DAMAGE, DIRECT, INCIDENTAL, OR CONSEQUENTIAL, INCLUDING LOSS OF PROFITS OR REVENUE ARISING OUT OF THE USE OR THE INABILITY TO USE A PRODUCT. No statement, purchase order or recommendations by seller or purchaser not contained herein shall have any force or effect unless in an agreement signed by the officers of the seller and manufacturer.