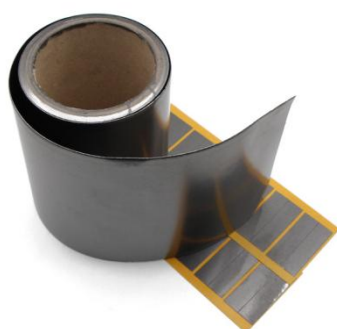


Natural Graphite Thermal Sheet CTLGS300

CTLGS300 graphite thermal pad is a new thermal interface material. It transfers heat along the two directions, shielding heat source and components meanwhile improving the performance of consumer electronics products. The thermal impedance of LGS is very small and can completely replace the high-performance thermal grease while avoiding the shortcoming of poor and dirty thermal grease process. LGS thermal conductivity is three-dimensional, that is not only it can transfer heat between the heat source and the radiator in the vertical direction, but also in the vertical direction, which ensures that it can quickly transfer heat out in vertical direction when the partial heat is high. Therefore, LGS thermal film is very suitable in the small space to efficiently transfer heat generated by heat source.



Thermally Conductive Material

TYPICAL PROPERTIES OF NATURAL GRAPHITE CTLGS300			
Test Item	Unit	CTLGS300	Test Method
Colour	-	Black	Visually
Thickness	mm	0.13/0.25	ASTM D374/374M
Temp Resistance	°C	-40~400	-
Tensile Strength	4900KPa	715PS	ASTM D412
Hardness	Shore A	80	GB/T531
Flame	-	V-0	UL 94
Thermal Conductivity (X)	W/mk	30	ISO 22007-2
Thermal Conductivity (Y)	W/mk	300	ISO 22007-2

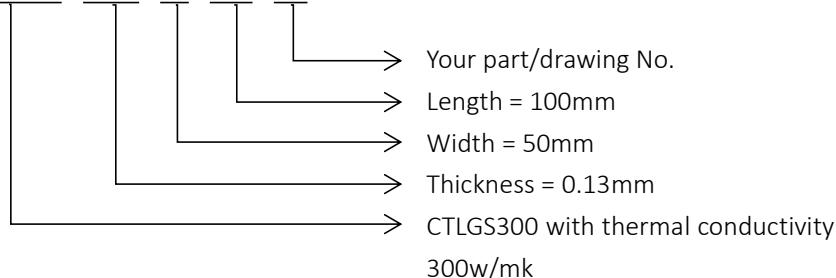
Configurations Available:

- Sheet form, die-cut parts, and roll form
- With or without pressure sensitive adhesive

Build a Part Number

Standard Options

CTLGS300 - T013 - 50 - 100 - NA



Product Features

- Ultra-high thermal conductivity, easy to operate.
- Low thermal resistance.
- Light weight.

Typical Applications

- IC ; CPU; MOS; LED; Heat sink; LCD-TV; Laptop; Communication equipment; Wireless switch; DVD; Hand-held device; Camera/digital camera; Mobile phone.

Note: The material can be customized. If you can't find the material that meets your requirements in our existing materials, you can consult the sales manager whether the material you need supports customization, and we will give you a reply within 24H.

www.coolthermo.com

CoolThermo - Asia

Phone: 86-133-1690-6731

Skype: 86-133-1690-6731

Email: info@coolthermo.com

Add: Room 101, No. 214, District 3, Longsheng New Village, Longsheng Community, Dalang Street, Longhua District, Shenzhen 518110

All statements, technical information and recommendations herein are based on tests we believe to be reliable, and THE FOLLOWING IS MADE IN LIEU OF ALL WARRANTIES, EXPRESSED OR IMPLIED, INCLUDING THE IMPLIED WARRANTIES OF MARKETABILITY AND FITNESS FOR PURPOSE. Sellers' and manufacturers' only obligation shall be to replace such quantity of the product proved to be defective. Before using, user shall determine the suitability of the product for its intended use, and the user assumes all risks and liability whatsoever in connection therewith. NEITHER SELLER NOR MANUFACTURER SHALL BE LIABLE EITHER IN TORT OR IN CONTRACT FOR ANY LOSS OR DAMAGE, DIRECT, INCIDENTAL, OR CONSEQUENTIAL, INCLUDING LOSS OF PROFITS OR REVENUE ARISING OUT OF THE USE OR THE INABILITY TO USE A PRODUCT. No statement, purchase order or recommendations by seller or purchaser not contained herein shall have any force or effect unless in an agreement signed by the officers of the seller and manufacturer.